

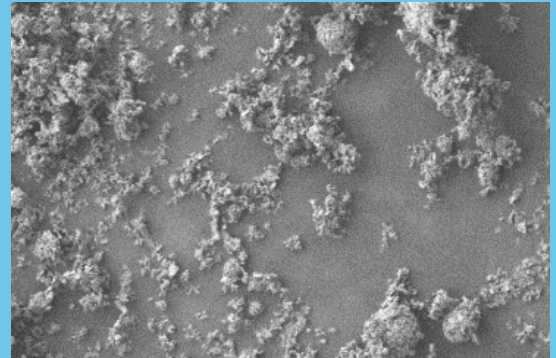
## PRODUCT SPECIFICATION SUPALOX A2

PRODUCT	Ultra High Purity Aluminum Oxide, Al <sub>2</sub> O <sub>3</sub>	PURITY	> 99.999%
---------	--	--------	-----------

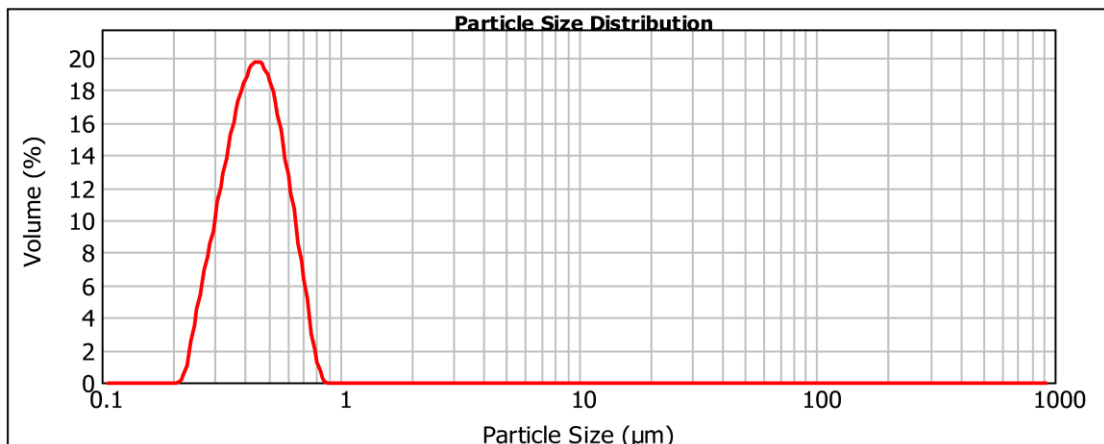
PARAMETERS	METHOD	SPECIFICATIONS
<b>TYPICAL PHYSICAL PROPERTIES</b>		
Appearance	Visual inspection	White Powder
Crystallinity	XRD	Alpha-alumina
D10	Laser Diffraction	0.3 μm
D50	Laser Diffraction	0.45 μm
D90	Laser Diffraction	0.6 μm
Moisture	2 hrs at 120°C	<1.0 %
Surface Area	N <sub>2</sub> adsorption (BET)	<10 m <sup>2</sup> /g
Tap Density	ASTM B527 – 06	> 0.80 g/cm <sup>3</sup>



<b>TYPICAL CHEMICAL COMPOSITION</b>		
Na	ICP-MS	<3 ppm
Mg	ICP-MS	<1 ppm
Si	ICP-MS	<3 ppm
K	ICP-MS	<2 ppm
Ca	ICP-MS	<2 ppm
Fe	ICP-MS	<3 ppm



SUPALOX A2 is a milled alpha alumina product designed for premium ceramics, single crystal sapphire and battery applications.



For technical information, please contact: [info@aemcanada.com](mailto:info@aemcanada.com)

Manufactured with virtually zero CO<sub>2</sub> emission in CANADA

The listed properties represent the typical measured values for this product may not represent the final properties of a given batch. Contact AEM for more information.