

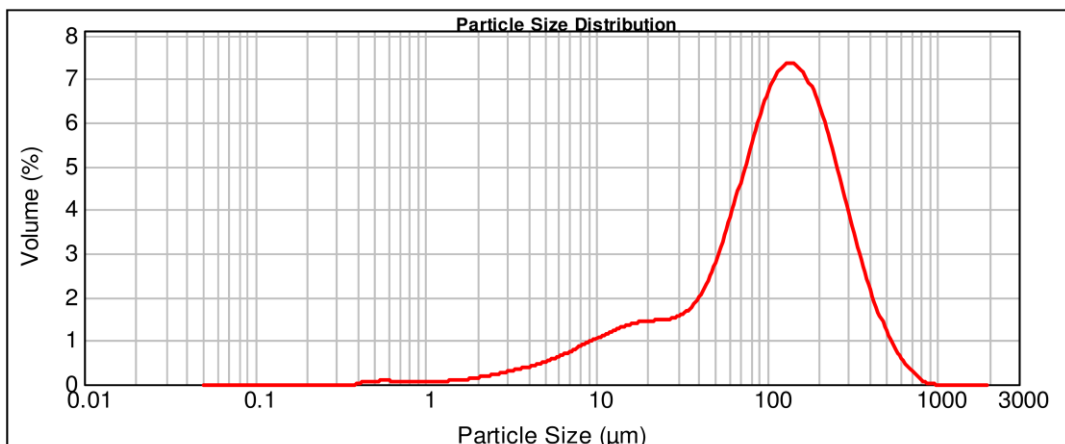
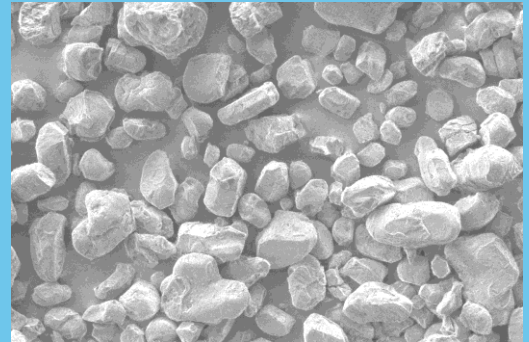
PRODUCT SPECIFICATION SUPALOX C9

| | | | |
|---------|--|--------|-----------|
| PRODUCT | Ultra High Purity Aluminum Oxide, Al ₂ O ₃ | PURITY | > 99.995% |
|---------|--|--------|-----------|

| PARAMETERS | METHOD | SPECIFICATIONS |
|------------------------------------|---------------------------------|--------------------------|
| TYPICAL PHYSICAL PROPERTIES | | |
| Appearance | Visual inspection | White Powder |
| Crystallinity | XRD | Alpha-alumina |
| D10 | Laser Diffraction | 50 µm |
| D50 | Laser Diffraction | 110 µm |
| D90 | Laser Diffraction | 150 µm |
| Moisture | 2 hrs at 120°C | <1.0 % |
| Surface Area | N ₂ adsorption (BET) | <10 m ² /g |
| Tap Density | ASTM B527 – 06 | > 0.60 g/cm ³ |



| TYPICAL CHEMICAL COMPOSITION | | |
|-------------------------------------|--------|---------|
| Na | ICP-MS | <5 ppm |
| Mg | ICP-MS | <3 ppm |
| Si | ICP-MS | <30 ppm |
| K | ICP-MS | <2 ppm |
| Ca | ICP-MS | <3 ppm |
| Fe | ICP-MS | <8 ppm |



For technical information, please contact: info@aemcanada.com

Manufactured with virtually zero CO₂ emission in CANADA

The listed properties represent the typical measured values for this product may not represent the final properties of a given batch. Contact AEM for more information.