

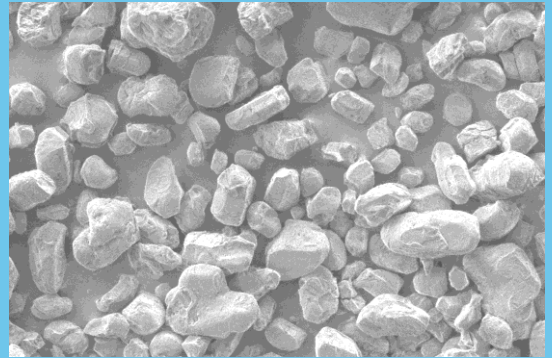
## PRODUCT SPECIFICATION SUPALOX CG18

|         |  |        |           |
|---------|--|--------|-----------|
| PRODUCT | Ultra High Purity Aluminum Oxide, Al <sub>2</sub> O <sub>3</sub> | PURITY | > 99.995% |
|---------|--|--------|-----------|

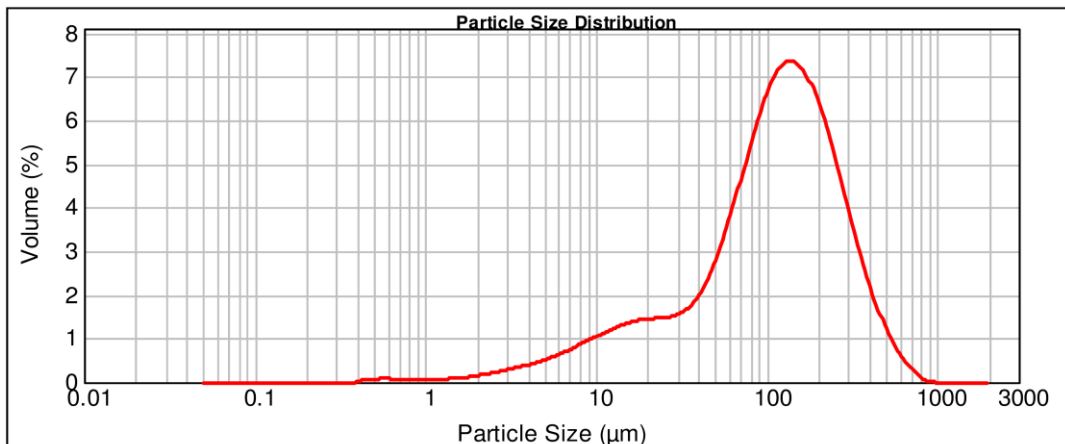
| PARAMETERS                 | METHOD                          | SPECIFICATIONS           |
|----------------------------|---------------------------------|--------------------------|
| <b>PHYSICAL PROPERTIES</b> |                                 |                          |
| Appearance                 | Visual inspection               | White Powder             |
| Crystallinity              | XRD                             | Gamma-alumina            |
| D10                        | Laser Diffraction               | 65 μm                    |
| D50                        | Laser Diffraction               | 100 μm                   |
| D90                        | Laser Diffraction               | 180 μm                   |
| Moisture / LOI             | 120°C / 1100°C                  | <3.0 % / <5.0 %          |
| Surface Area               | N <sub>2</sub> adsorption (BET) | 50-70 m <sup>2</sup> /g  |
| Tap Density                | ASTM B527 – 06                  | > 0.60 g/cm <sup>3</sup> |



| <b>CHEMICAL COMPOSITION</b> |        |         |
|-----------------------------|--------|---------|
| Na                          | ICP-MS | <2 ppm  |
| Mg                          | ICP-MS | <1 ppm  |
| Si                          | ICP-MS | <40 ppm |
| Ca                          | ICP-MS | <2 ppm  |
| Fe                          | ICP-MS | <5 ppm  |
| K                           | ICP-MS | <1 ppm  |



SUPALOX CG18 is a non-ground gamma alumina product designed for single crystal sapphire synthesis and catalysis applications requiring very high purity.



For technical information, please contact: [info@aemcanada.com](mailto:info@aemcanada.com)

Manufactured with virtually zero CO<sub>2</sub> emission in CANADA 

The listed properties represent the typical measured values for this product may not represent the final properties of a given batch. Contact AEM for more information.