

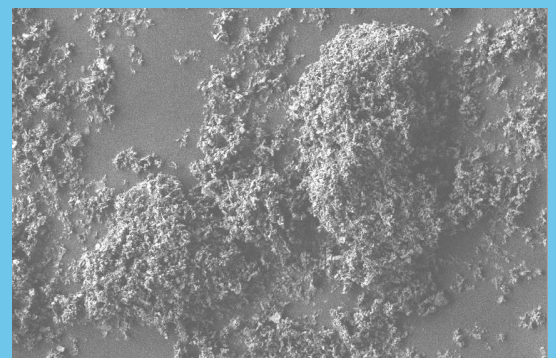
## PRODUCT SPECIFICATION SUPALOX FX

|         |  |        |          |
|---------|--|--------|----------|
| PRODUCT | High Purity Aluminum Oxide, Al <sub>2</sub> O <sub>3</sub> | PURITY | > 99.80% |
|---------|--|--------|----------|

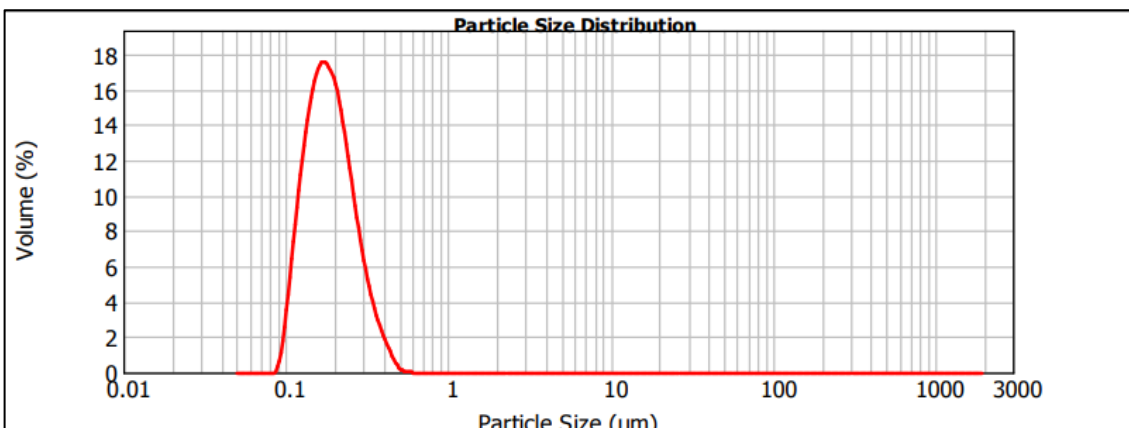
| PARAMETERS                         | METHOD                          | SPECIFICATIONS        |
|------------------------------------|---------------------------------|-----------------------|
| <b>TYPICAL PHYSICAL PROPERTIES</b> |                                 |                       |
| Appearance                         | Visual inspection               | White Powder          |
| Crystallinity                      | XRD                             | Alpha-alumina         |
| D10                                | Laser Diffraction               | 0.12 µm               |
| D50                                | Laser Diffraction               | 0.18 µm               |
| D90                                | Laser Diffraction               | 0.29 µm               |
| Moisture                           | 2 hrs at 120°C                  | <1.0 %                |
| Surface Area                       | N <sub>2</sub> adsorption (BET) | <10 m <sup>2</sup> /g |
| Loose Bulk Density                 | ASTM D7481-09                   | 0.8 g/cm <sup>3</sup> |



| <b>TYPICAL CHEMICAL COMPOSITION</b> |        |           |
|-------------------------------------|--------|-----------|
| Na                                  | ICP-MS | <1000 ppm |
| Mg                                  | ICP-MS | <10 ppm   |
| Si                                  | ICP-MS | <100 ppm  |
| K                                   | ICP-MS | <15 ppm   |
| Ca                                  | ICP-MS | <150 ppm  |
| Fe                                  | ICP-MS | <80 ppm   |



SUPALOX FX is a spray dried product with an exceptionally low particle size distribution.



For technical information, please contact: [info@aemcanada.com](mailto:info@aemcanada.com)

Manufactured with virtually zero CO<sub>2</sub> emission in CANADA

The listed properties represent the typical measured values for this product may not represent the final properties of a given batch. Contact AEM for more information.