

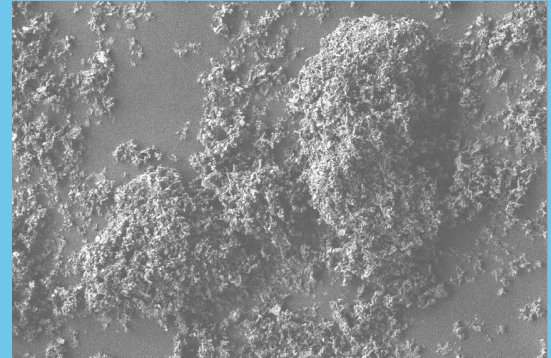
## PRODUCT SPECIFICATION SUPALOX N1

PRODUCT	High Purity Aluminum Oxide, Al <sub>2</sub> O <sub>3</sub>	PURITY	> 99.99%
---------	--	--------	----------

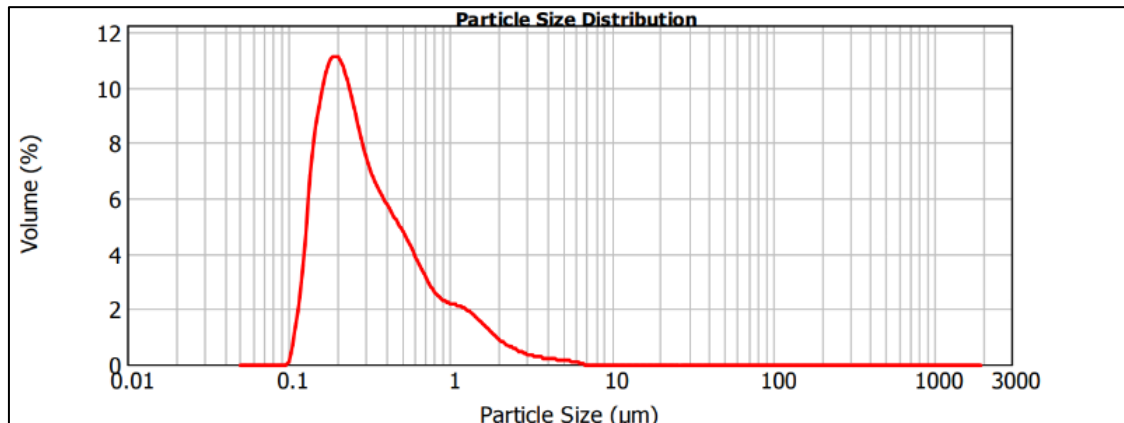
PARAMETERS	METHOD	SPECIFICATIONS
<b>PHYSICAL PROPERTIES</b>		
Appearance	Visual inspection	White Powder
Crystallinity	XRD	Alpha-alumina
D10	Laser Diffraction	0.15 µm
D50	Laser Diffraction	0.27 µm
D90	Laser Diffraction	1.02 µm
Moisture	2 hrs at 120°C	<1.0 %
Surface Area	N <sub>2</sub> adsorption (BET)	<10 m <sup>2</sup> /g
Tap Density	ASTM B527 – 06	> 0.80 g/cm <sup>3</sup>



<b>CHEMICAL COMPOSITION</b>		
Na	ICP-MS	<40 ppm
Mg	ICP-MS	<5 ppm
Si	ICP-MS	<30 ppm
K	ICP-MS	<3 ppm
Ca	ICP-MS	<10 ppm
Fe	ICP-MS	<10 ppm



SupAlox N1 is a spray dried product with a very low particle size distribution for applications requiring precision and high purity.



For technical information, please contact: [info@aemcanada.com](mailto:info@aemcanada.com)

Manufactured with virtually zero CO<sub>2</sub> emission in CANADA 

The listed properties represent the typical measured values for this product may not represent the final properties of a given batch. Contact AEM for more information.