

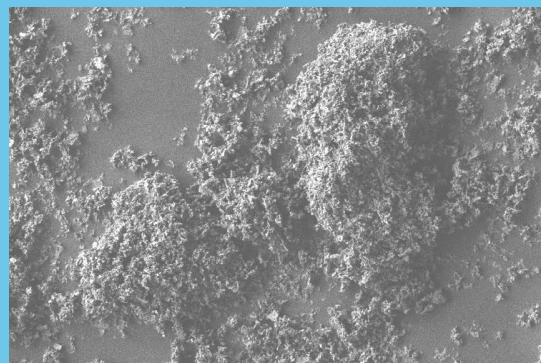
PRODUCT SPECIFICATION SUPALOX N2

| | | | |
|---------|------------------------------------------------------------|--------|----------|
| PRODUCT | High Purity Aluminum Oxide, Al ₂ O ₃ | PURITY | > 99.99% |
|---------|------------------------------------------------------------|--------|----------|

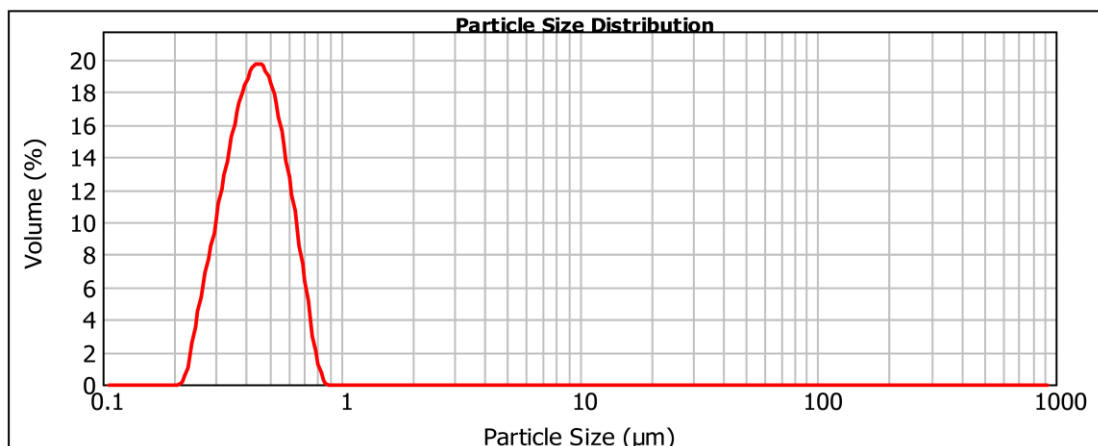
| PARAMETERS | METHOD | SPECIFICATIONS |
|------------------------------------|---------------------------------|--------------------------|
| TYPICAL PHYSICAL PROPERTIES | | |
| Appearance | Visual inspection | White Powder |
| Crystallinity | XRD | Alpha-alumina |
| D10 | Laser Diffraction | 0.30 µm |
| D50 | Laser Diffraction | 0.45 µm |
| D90 | Laser Diffraction | 0.60 µm |
| Moisture | 2 hrs at 120°C | <1.0 % |
| Surface Area | N ₂ adsorption (BET) | <10 m ² /g |
| Tap Density | ASTM B527 – 06 | > 0.80 g/cm ³ |



| TYPICAL CHEMICAL COMPOSITION | | |
|------------------------------|--------|---------|
| Na | ICP-MS | <40 ppm |
| Mg | ICP-MS | <5 ppm |
| Si | ICP-MS | <30 ppm |
| K | ICP-MS | <3 ppm |
| Ca | ICP-MS | <10 ppm |
| Fe | ICP-MS | <10 ppm |



SUPALOX N2 is a milled, spray-dried very fine alpha alumina product. It is designed for ceramics, phosphors and industrial applications.



For technical information, please contact: info@aemcanada.com

Manufactured with virtually zero CO₂ emission in CANADA

The listed properties represent the typical measured values for this product may not represent the final properties of a given batch. Contact AEM for more information.