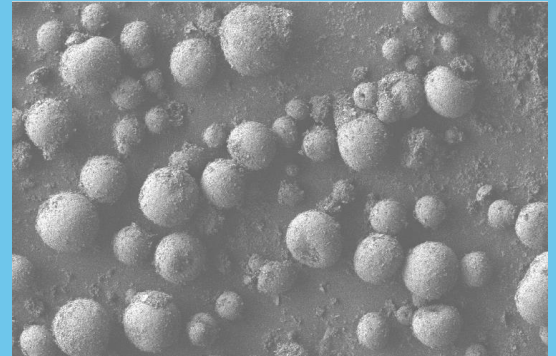


PRODUCT SPECIFICATION SUPALOX C4011

| | | | |
|---------|--|--------|----------|
| PRODUCT | High Purity Aluminum Oxide, Al ₂ O ₃ | PURITY | > 99.99% |
|---------|--|--------|----------|

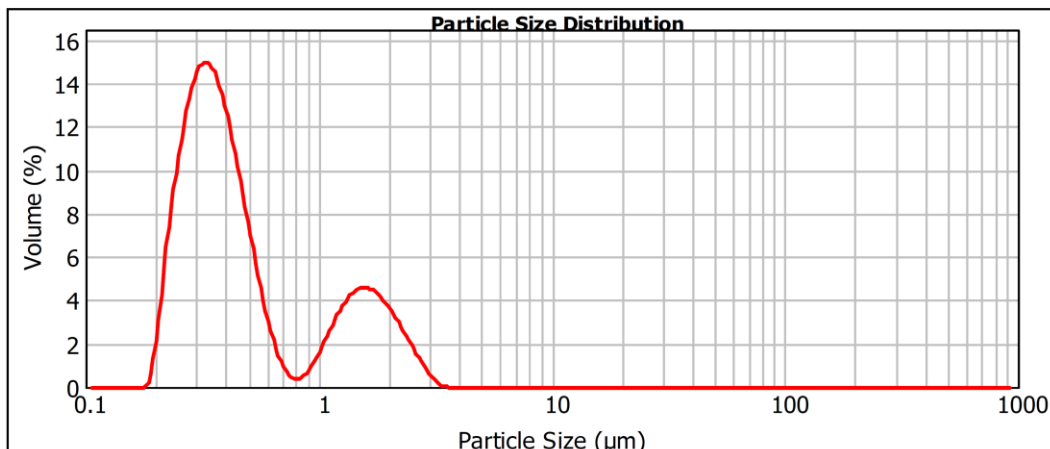
| PARAMETERS | METHOD | SPECIFICATIONS |
|------------------------------|---------------------------------|--------------------------|
| PHYSICAL PROPERTIES | | |
| Appearance | Visual inspection | White Powder |
| Crystallinity | XRD | Alpha-alumina |
| D10 | Laser Diffraction | 0.25 µm |
| D50 | Laser Diffraction | 0.38 µm |
| D90 | Laser Diffraction | 1.70 µm |
| Moisture | 2 hrs at 120°C | <1.0 % |
| Surface Area | N ₂ adsorption (BET) | <5 m ² /g |
| Tap Density | ASTM B527 - 06 | > 0.80 g/cm ³ |
| pH (15% in H ₂ O) | ASTM D1293 - 18 | 4-5 & 7-8* |



*Supplied according to request

| CHEMICAL COMPOSITION | | |
|-----------------------------|--------|---------|
| Na | ICP-MS | <40 ppm |
| Mg | ICP-MS | <5 ppm |
| Si | ICP-MS | <30 ppm |
| K | ICP-MS | <3 ppm |
| Ca | ICP-MS | <10 ppm |
| Fe | ICP-MS | <10 ppm |

C4011 is a ball-mill deagglomerated and spray dried product. Mg doping or binder addition (for Ready to Press) is available on request.



For technical information, please contact: info@aemcanada.com

Manufactured with virtually zero CO₂ emission in CANADA