

PRODUCT SPECIFICATION SUPALOX E4011

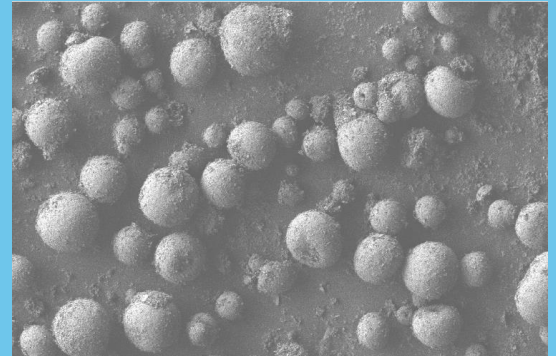
PRODUCT	High Purity Aluminum Oxide, Al ₂ O ₃	PURITY	> 99.99%
---------	--	--------	----------

PARAMETERS	METHOD	SPECIFICATIONS
PHYSICAL PROPERTIES		
Appearance	Visual inspection	White Powder
Crystallinity	XRD	Alpha-alumina
D10	Laser Diffraction	0.5 µm
D50	Laser Diffraction	1 µm
D90	Laser Diffraction	3 µm
Moisture	2 hrs at 120°C	<1.0 %
Surface Area	N ₂ adsorption (BET)	<5 m ² /g
Tap Density	ASTM B527 - 06	> 0.80 g/cm ³
pH (15% in H ₂ O)	ASTM D1293 - 18	4-5 & 7-8*

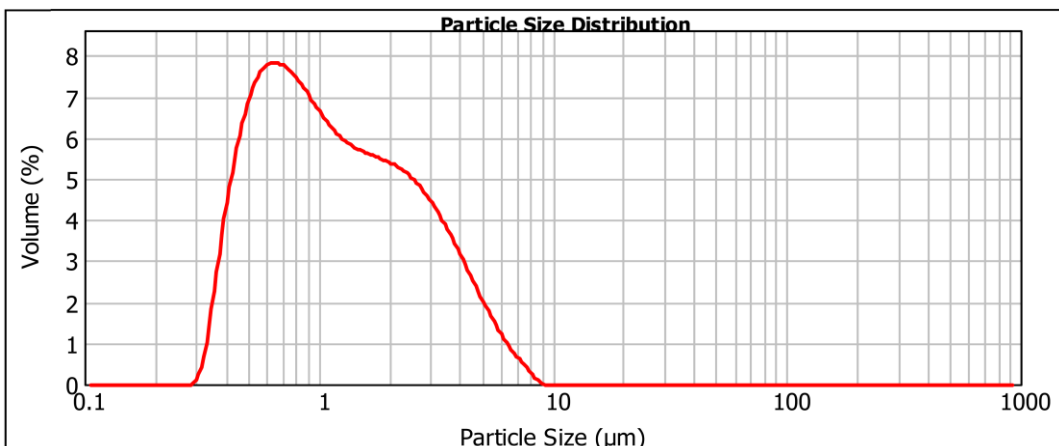


*Supplied according to request

CHEMICAL COMPOSITION		
Na	ICP-MS	<40 ppm
Mg	ICP-MS	<5 ppm
Si	ICP-MS	<30 ppm
K	ICP-MS	<3 ppm
Ca	ICP-MS	<10 ppm
Fe	ICP-MS	<10 ppm



E4011 is a ball-mill deagglomerated and spray dried product. Mg doping or binder addition (for Ready to Press) is available on request.



For technical information, please contact: info@aemcanada.com

Manufactured with virtually zero CO₂ emission in CANADA