

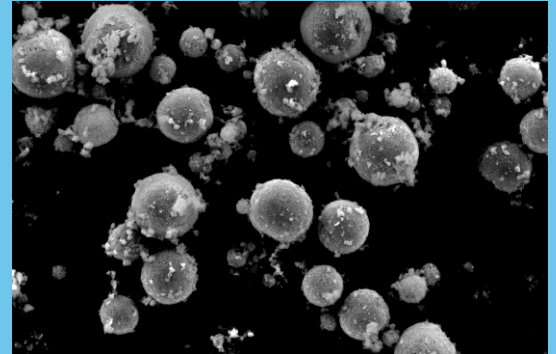
PRODUCT SPECIFICATION SUPALOX E4011G

PRODUCT	High Purity Aluminum Oxide, Al ₂ O ₃	PURITY	> 99.99%
---------	--	--------	----------

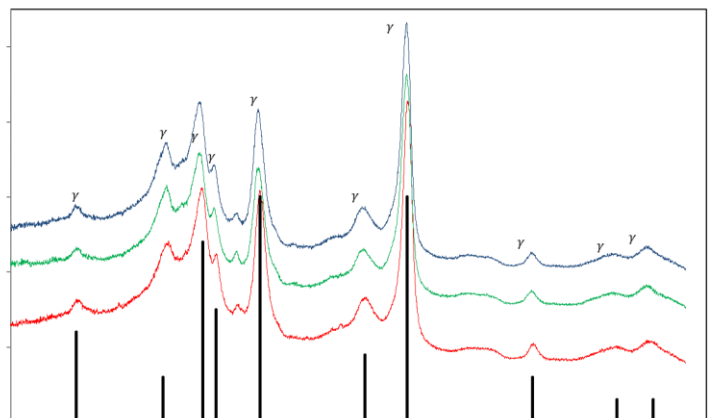
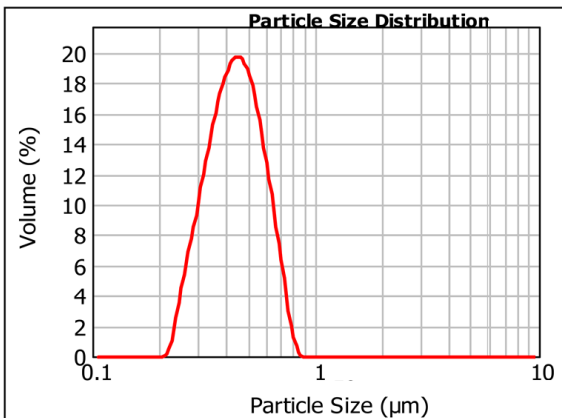
PARAMETERS	METHOD	SPECIFICATIONS
PHYSICAL PROPERTIES		
Appearance	Visual inspection	White Powder
Crystallinity	XRD	Gamma-alumina
Primary Particle Size	Laser Diffraction	0.3 - 0.5 μm
Moisture	2 hrs at 120°C	<3.0 %
Surface Area	N ₂ adsorption (BET)	55-70 m ² /g
Tap Density	ASTM B527 - 06	> 0.80 g/cm ³



CHEMICAL COMPOSITION		
Na	ICP-MS	<40 ppm
Mg	ICP-MS	<5 ppm
Si	ICP-MS	<30 ppm
K	ICP-MS	<3 ppm
Ca	ICP-MS	<10 ppm
Fe	ICP-MS	<10 ppm



* E4011G is a ball-mill deagglomerated and spray dried product.



For technical information, please contact: info@aemcanada.com

Manufactured with virtually zero CO₂ emission in CANADA